

Diabetic Retinopathy Prediction Using Machine Learning

Mr.I.Gobi M.C.A.,M.Phil., D.Coop., Ms. Illakiya P

¹*Department of Information Technology, Sri Krishna Adithya College of Arts and Science, Coimbatore, Tamil Nadu, India gobii@skacas.ac.in*

²*Department of Information Technology, Sri Krishna Adithya College of Arts and Science, Coimbatore, Tamil Nadu, India illakiyaponnusamy2005@gmail.com*

Abstract

Diabetic Retinopathy (DR) is a serious complication of diabetes that can lead to vision loss if not detected early. With the global prevalence of diabetes rising, there is an increasing need for efficient and scalable DR screening methods. Traditional diagnosis relies on manual examination of retinal images by ophthalmologists, which is often time-consuming, subjective, and prone to human error.

Machine learning (ML) has emerged as a powerful tool in medical diagnosis, enabling automated, accurate, and early prediction of DR using retinal images and patient data. This paper explores various ML approaches for DR prediction, including supervised learning, deep learning, transfer learning, and ensemble learning techniques. The role of Python in model development is highlighted, with emphasis on key libraries such as TensorFlow, PyTorch, and Scikit-Learn.

The study also examines challenges in DR prediction, including data quality, model interpretability, and ethical concerns in AI-driven healthcare. In addition, it discusses the benefits of automated DR screening, such as faster diagnosis, reduced workload for ophthalmologists, improved accessibility in remote areas, and cost-effectiveness. Ethical considerations, including bias, privacy, and accountability, are also addressed.

Finally, the paper outlines future directions in ML-driven ophthalmology, focusing on explainable AI (XAI), federated learning, edge AI, and integration with wearable devices for continuous eye health monitoring. With ongoing advancements in AI and medical imaging, ML-powered DR detection has the potential to transform ophthalmology, improving patient outcomes and reducing the burden on healthcare systems.

Keywords: Diabetic Retinopathy, Machine Learning, Deep Learning, Python, Medical Imaging, AI in Healthcare, Ophthalmology.

1. Introduction

Diabetic Retinopathy (DR) is a serious and progressive eye disease caused by long-term high blood sugar levels in individuals with diabetes. It is one of the leading causes of vision impairment and blindness worldwide. If DR is not detected and treated at an early stage, it can result in permanent vision loss. Regular screening and timely diagnosis play a crucial role in preventing severe complications and preserving eyesight.

Traditionally, DR diagnosis relies on the manual examination of retinal fundus images by ophthalmologists. Although effective, this approach is time-consuming, labor-intensive, and subject to human error and variability. With the global rise in diabetes cases, healthcare systems are under increasing pressure to provide faster, more accurate, and scalable screening solutions.

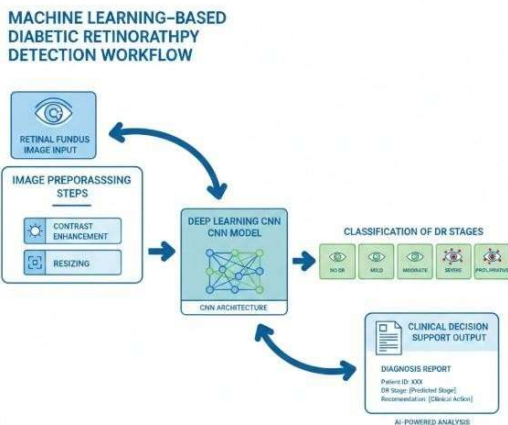
Machine learning (ML) and deep learning (DL) have emerged as powerful tools in medical imaging, offering automated and highly accurate methods for DR detection. These techniques can analyze retinal images efficiently, reduce diagnostic workload, and eliminate subjectivity in medical interpretation. Among these methods, Convolutional Neural Networks (CNNs) have demonstrated remarkable performance in identifying DR-related features, often matching or surpassing the accuracy of human experts.

Python has become the preferred programming language for developing ML-based DR prediction systems due to its simplicity and extensive ecosystem of libraries such as TensorFlow, Keras, PyTorch, and Scikit-Learn. These tools enable researchers and clinicians to build, train, and deploy models capable of real-time and remote diagnosis.

This paper explores various machine learning

approaches used in DR prediction, the role of Python libraries in model development, practical applications, benefits, challenges, ethical considerations, and future directions in ML-driven ophthalmology.

Figure 1.1



2. Machine Learning Approaches for Diabetic Retinopathy Prediction

2.1. Supervised Learning

Supervised learning techniques use labeled retinal images to train models that classify different stages of Diabetic Retinopathy. Common algorithms include Support Vector Machines (SVM), Decision Trees, and Random Forests.

SVMs are effective for handling high-dimensional image features, while Decision Trees and Random Forests reduce overfitting and capture complex patterns within the data. These methods are often used as baseline models or in combination with deep learning approaches.

2.2 Deep Learning

Deep learning, particularly Convolutional Neural Networks (CNNs), plays a central role in DR detection. CNNs automatically extract relevant features from retinal images, eliminating the need for manual feature engineering. Popular architectures such as VGG16, ResNet, and Efficient Net have been widely used for DR classification due to their high accuracy and robustness. These models learn hierarchical image

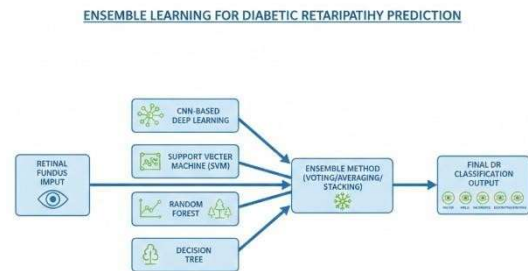


Figure 2.4.1

features that significantly enhance diagnostic performance.

2.3 Transfer Learning

Transfer learning improves model performance by fine-tuning pre-trained networks on DR-specific datasets. Instead of training models from scratch, existing models trained on large image datasets (such as ImageNet) are adapted for retinal image analysis. This approach reduces training time, lowers computational requirements, and delivers better results, especially when labeled medical datasets are limited.

2.4 Ensemble Learning

Ensemble learning combines multiple machine learning models to improve accuracy and reliability. Techniques such as bagging, boosting, and stacking aggregate predictions from different classifiers, reducing bias and variance. Combining CNN outputs with traditional ML models or merging multiple deep learning architectures often leads to better generalization and more stable DR predictions. Python Libraries for Diabetic Retinopathy Prediction

2.5 NumPy and Pandas

NumPy and Pandas are essential for data preprocessing and manipulation. NumPy supports efficient numerical computations and array operations, while Pandas provides DataFrames that simplify data cleaning, transformation, and analysis of patient records and DR labels.

2.6 OpenCV and PIL

OpenCV and PIL (Pillow) are widely used for retinal image processing. OpenCV offers advanced image enhancement techniques such as resizing, contrast adjustment, and edge detection. PIL supports basic image operations like loading, cropping, and format conversion, ensuring compatibility with deep learning models.

2.7 Matplotlib and Seaborn

Matplotlib and Seaborn are used to visualize datasets and model performance. They help analyze image distributions, training progress, confusion matrices, and performance metrics. Seaborn enhances visualization through heatmaps and correlation plots, aiding in model evaluation.

2.8 Scikit-Learn

Scikit-Learn provides traditional machine learning algorithms and evaluation metrics. It supports classifiers such as SVMs, Decision Trees, and Random Forests, along with performance measures like accuracy, precision, recall, and F1-score.

2.9 TensorFlow and PyTorch

TensorFlow and PyTorch are leading deep learning frameworks used for CNN-based DR prediction. TensorFlow offers scalability and optimized GPU support, while PyTorch provides flexibility and ease of debugging through dynamic computation graphs.

2.10 Keras

Keras is a high-level API built on TensorFlow that simplifies deep learning model development. It allows rapid prototyping with prebuilt layers, activation functions, and optimizers, making it ideal for DR classification tasks.

4.1 Applications of Machine Learning in Diabetic Retinopathy

4.2 Automated Screening

ML enables automated DR screening by rapidly analyzing retinal images and

reducing human workload and improving screening efficiency.

4.3 Early Detection

ML models can identify early signs of DR before noticeable symptoms appear. Early detection allows timely intervention, preventing disease progression and reducing the risk of vision loss.

4.4 Personalized Treatment

Machine learning supports personalized treatment by analyzing patient-specific data, including retinal scans, medical history, and lifestyle factors. This helps predict treatment outcomes and tailor therapy plans for better results.

4.5 Telemedicine

ML-powered DR prediction supports telemedicine by enabling remote diagnosis. Retinal images captured in rural or underserved areas can be analyzed automatically, improving accessibility to quality eye care and reducing healthcare costs.

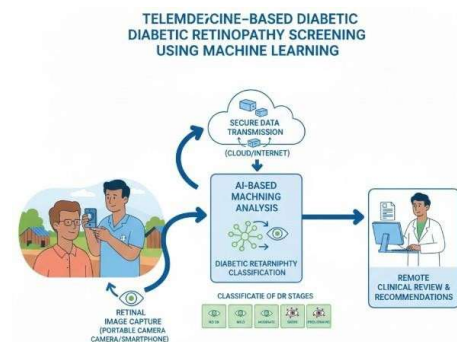


Figure 4.4.1 classifying disease severity. CNN-based models detect retinal abnormalities such as microaneurysms and hemorrhages,

5. Conclusion

Machine learning has transformed Diabetic Retinopathy prediction by enabling accurate,

automated, and early diagnosis. Deep learning models, particularly CNNs, have significantly improved screening accuracy, while Python-based tools have made model development accessible and scalable.

Despite existing challenges such as data quality, interpretability, and ethical concerns, ongoing research in explainable AI, federated learning, and telemedicine continues to enhance trust and effectiveness. With continued collaboration among researchers, clinicians, and policymakers, ML-driven DR screening systems have the potential to reduce vision loss, improve patient outcomes, and revolutionize ophthalmic healthcare worldwide.

R. Rajalakshmi, S. Arulmalar, M. Usha, V. Prathiba, and V. Lakshminarayanan, “Automated Diabetic Retinopathy Detection in Smartphone-Based Fundus Photography Using Artificial Intelligence,” *Indian Journal of Ophthalmology*, vol. 66, no. 11, pp. 1568–1574, 2018.

[3] M. D. Abramoff, Y. Lou, A. Erginay, W. Clarida, R. Amelon, J. C. Folk, and M. Niemeijer, “Improved Automated Detection of Diabetic Retinopathy on a Publicly Available Dataset Through Deep Learning,” *Ophthalmology*, vol. 123, no. 4, pp. 786–795, 2016.

[4] D. S. W. Ting, C. Y. Cheung, G. Lim, et al., “Development and Validation of a Deep Learning System for Diabetic Retinopathy and Related Eye Diseases Using Retinal Images from Multiethnic Populations with Diabetes,” *JAMA*, vol. 318, no. 22, pp. 2211–2223, 2017.

6. References

V. Gulshan, L. Peng, M. Coram, et al., “Development and Validation of a Deep Learning Algorithm for Detection of Diabetic Retinopathy in Retinal Fundus Photographs,” *JAMA*, vol. 316, no. 22, pp. 2402–2410, 2016.

C. Leibig, V. Allken, M. S. Ayhan, et al., “Leveraging Uncertainty Information from Deep Neural Networks for Disease Detection,” *Nature Machine Intelligence*, vol. 1, pp. 51–60, 2017.