

Fertilizer Recommendation System Using Machine Learning

Guruprasath V, Yogashri V

Department of Information Technology, Rathinam College of Arts and Science Coimbatore, Tamil Nadu, India. Assistant Professor, Department of Computer Science, Rathinam College of Arts and Science, Coimbatore, Tamil Nadu, India

guruprasathv0729@gmail.com, yogaherby2902@gmail.com

Abstract - Efficient fertilizer management is essential for improving agricultural productivity while maintaining soil health and environmental sustainability. Traditional fertilizer recommendation methods rely on generalized guidelines and manual expertise, which often lack precision and fail to consider soil variability. This paper presents an intelligent Fertilizer Recommendation System using Machine Learning that predicts the most suitable fertilizer based on soil nutrients and environmental conditions. The system utilizes parameters such as Nitrogen (N), Phosphorus (P), Potassium (K), pH level, temperature, humidity, and rainfall to generate accurate recommendations. Multiple machine learning algorithms, including Random Forest, Support Vector Machine, and Linear Regression, are evaluated, with Random Forest achieving the best performance. The system is implemented as a web-based application using Python and Flask, providing real-time recommendations with high accuracy. The proposed system improves crop yield, reduces excessive fertilizer usage, and supports sustainable farming practices.

Keywords – Machine Learning; Fertilizer Recommendation; Random Forest; Soil Analysis; Precision Agriculture; Decision Support System.

I. INTRODUCTION

Agriculture is one of the most fundamental sectors that supports human survival and economic stability, especially in countries like India where a significant portion of the population depends on farming for their livelihood. With the rapid increase in population and food demand, there is a growing need to enhance agricultural productivity while maintaining soil health and environmental sustainability. One of

the critical factors that influence crop yield is the appropriate use of fertilizers. Fertilizers provide essential nutrients such as Nitrogen (N), Phosphorus (P), and

Potassium (K), which are necessary for plant growth and development. However, the improper selection and excessive use of fertilizers can lead to soil degradation, water pollution, and reduced crop productivity.

Traditionally, farmers rely on their personal experience, advice from local agricultural experts, or generalized guidelines to decide the type and quantity of fertilizers to use. While these methods have been in practice for decades, they often lack precision and fail to consider the unique characteristics of individual soil conditions and environmental factors. Soil composition varies significantly from one region to another, and even within the same field, nutrient levels may differ. As a result, a one-size-fits-all approach to fertilizer application is inefficient and can lead to either nutrient deficiency or nutrient toxicity in crops.

In recent years, advancements in technology, particularly in the field of Machine Learning (ML), have opened new possibilities for improving agricultural practices. Machine learning is a subset of artificial intelligence that enables systems to learn

from data, identify patterns, and make predictions or decisions without being explicitly programmed. By applying machine learning techniques to agricultural data, it is possible to develop intelligent systems that can provide accurate and customized recommendations to farmers.

Machine Learning (ML) provides a powerful solution by analyzing historical and real-time data to

II. RELATED WORKS

A. Traditional Approaches

Traditional fertilizer recommendation systems are based on manual observation, farmer experience, and government-provided guidelines. While these methods are simple and widely used, they lack precision and adaptability. Recommendations are often generalized and do not consider specific soil conditions or environmental variations.

B. Machine Learning in Agriculture

Machine learning has been increasingly applied in agriculture for tasks such as crop prediction, yield estimation, disease detection, and fertilizer recommendation. Algorithms like Decision Trees, Random Forest, and Support Vector Machines have shown promising results in classification and prediction problems.

Random Forest, in particular, is widely used due to its ability to handle large datasets, reduce overfitting, and improve prediction accuracy.

III. SYSTEM DESIGN

A. Overall Architecture

The overall architecture of the Fertilizer Recommendation System is designed as a multi-layered framework that integrates web technologies and machine learning to

generate accurate predictions. This project introduces a Fertilizer Recommendation System that uses ML algorithms to suggest the most suitable fertilizer based on soil and environmental inputs. The system aims to improve productivity, reduce costs, and promote sustainable agriculture.

Similarly, Support Vector Machines are effective in handling high-dimensional data and providing robust classification.

C. Limitations of Existing Systems

Despite advancements, many existing systems still face limitations such as :

Lack of real-time prediction capabilities

Limited use of environmental parameters

Poor user interface design

Dependency on static datasets

These limitations reduce the effectiveness and usability of such systems.

D. Research Gap

There is a need for a comprehensive system that integrates soil parameters, environmental factors, and machine learning algorithms to provide accurate, real-time fertilizer recommendations. The proposed system addresses this gap by combining data-driven techniques with a user-friendly interface.

provide accurate and efficient fertilizer recommendations. It consists of

interconnected components such as the user interface, data processing unit, machine learning model, backend system, and database, all working together in a structured pipeline. The user interface serves as the entry point, allowing users to input soil and environmental parameters like Nitrogen,

Phosphorus, Potassium, pH, temperature, humidity, and rainfall in a simple and user-friendly manner.

The processed data is forwarded to the machine learning layer, where algorithms such as Random Forest, Support Vector Machine, and Linear Regression are used to generate predictions, with Random Forest being the primary model due to its high accuracy and robustness. The backend, implemented using Flask, manages communication between components and ensures smooth execution of the system.

B. Data Source and Preprocessing

The dataset used in this project is obtained from publicly available agricultural datasets that include essential soil and environmental parameters required for fertilizer prediction. The dataset consists of features such as Nitrogen (N), Phosphorus (P), Potassium (K), pH value, temperature, humidity, rainfall, and corresponding fertilizer labels. These parameters play a critical role in determining soil fertility and crop nutrient requirements, making them suitable for training machine learning models.

The preprocessing module performs several transformations to ensure data quality and consistency. Initially, the dataset is cleaned by handling missing values using statistical imputation techniques and removing duplicate records to avoid redundancy. Categorical variables, if present, are encoded into numerical format to ensure compatibility with machine learning algorithms.

Numerical features are normalized using scaling techniques such as Min-Max normalization to maintain uniformity across all input values. Additionally, feature selection methods are applied to remove irrelevant attributes, thereby improving model performance and reducing computational complexity. These preprocessing steps ensure that

the dataset is structured and optimized for accurate predictions.

Additionally, feature selection is performed to remove irrelevant attributes and improve model efficiency. These steps help in enhancing the accuracy of predictions and reducing computational complexity.

C. Machine Learning Models

The system evaluates multiple machine learning algorithms, including Random Forest, Support Vector Machine (SVM), and Linear Regression, to determine the most suitable model for prediction. Each algorithm has its own strengths in handling different types of data and patterns. Random Forest, in particular, is selected as the primary model due to its high accuracy, robustness, and ability to handle complex and non-linear relationships between input features. It works by combining multiple decision trees, which improves prediction performance and reduces the risk of overfitting. This makes it highly effective for agricultural datasets where multiple factors influence the outcome.

The Random Forest model consists of multiple decision trees, where each tree is trained on a subset of the dataset using bootstrap sampling. The final prediction is obtained through majority voting across all trees, which improves stability and reduces variance. The model is implemented using the Scikit-learn library and is configured with optimized hyperparameters to achieve the best performance. The trained model is saved as a serialized file and loaded during runtime for real-time prediction.

The trained model is saved as a serialized file and loaded during runtime for real-time prediction.

This makes it highly effective for agricultural datasets where multiple factors influence the outcome.

D. Model Training and Evaluation

The model training process involves splitting the dataset into training and testing sets using an 80/20 ratio. The training set is used to train the machine learning model, while the testing set is used to evaluate its performance on unseen data. To ensure reliability, the training process includes techniques such as cross-validation and hyperparameter tuning.

The performance of the model is evaluated using multiple metrics, including accuracy score, confusion matrix, and classification report. The accuracy score provides an overall measure of correct predictions, while the confusion matrix helps in identifying classification errors across different fertilizer classes. The classification report includes precision, recall, and F1-score, offering a detailed analysis of model performance. These evaluation methods ensure that the model is both accurate and reliable for real-world applications.

E. System Modules

The system is structured into several modules, each responsible for a specific functionality. The data input module collects user-provided soil and environmental parameters through the web interface. The data processing module handles preprocessing tasks such as

cleaning, normalization, and feature transformation. The model prediction module uses the trained machine learning model to generate fertilizer recommendations based on the processed input data.

The data processing module plays a critical role in preparing the input data for prediction. It performs preprocessing tasks such as data cleaning, normalization, and feature transformation to ensure

consistency with the training dataset. This module also handles error correction and data formatting, ensuring that the input data is compatible with the machine learning model. The model prediction module is responsible for executing the trained machine learning algorithm, which analyzes the processed data and generates fertilizer recommendations. It ensures efficient model loading and fast computation to support real-time predictions.

The output module is designed to present the results in a clear and user-friendly manner, converting technical predictions into understandable information for end users. It formats the output and integrates it with the frontend interface for better visualization. The database module is responsible for storing user inputs, prediction results, and historical records, which can be used for system monitoring, performance analysis, and future improvements. This modular architecture not only improves maintainability and scalability but also allows developers to update or replace individual components without affecting the entire system, thereby enhancing flexibility and long-term usability.

F. Output Design

The output design of the system focuses on delivering clear, informative, and actionable results that can be easily understood by users with varying levels of technical knowledge. Once the prediction is generated by the machine learning model, the system displays the recommended fertilizer along with additional supporting information such as application instructions, suggested dosage, and suitable crop conditions. This ensures that users not only receive accurate recommendations but also gain practical guidance on how to apply them effectively in real agricultural scenarios.

Furthermore, the output design ensures consistency and reliability by presenting results in a standardized format.

End to End Flow:

Figure 1: End to End Workflow

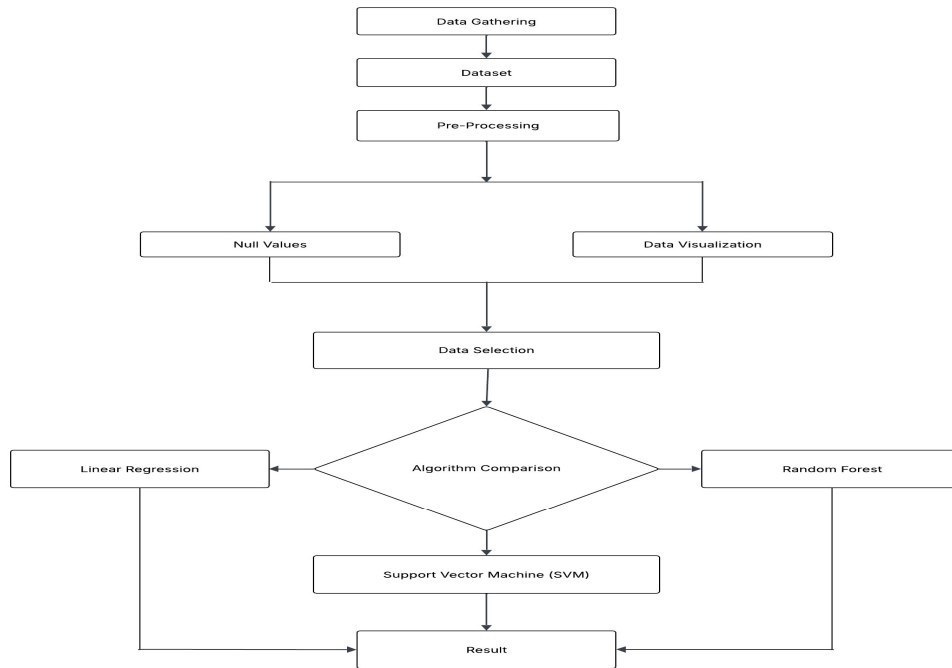


Figure 2: Fertilizer Usage and Type

IV. RESULT

The Fertilizer Recommendation System demonstrates reliable performance across diverse soil and environmental conditions, delivering accurate and actionable fertilizer recommendations through machine learning-based prediction. For a given set of input parameters such as Nitrogen (N), Phosphorus (P), Potassium (K), pH value, temperature, humidity, and rainfall, the system processes the data and generates fertilizer predictions with high consistency. The Random

Forest model, selected as the primary algorithm, shows strong predictive capability due to its ensemble nature and ability to handle non-linear relationships between features.

Key outcomes include accurate classification of fertilizer types based on soil nutrient composition, enabling users to make informed agricultural decisions. The system achieves high accuracy on test datasets, with minimal misclassification observed in cases where input parameters exhibit overlapping characteristics. The confusion matrix analysis

indicates that most fertilizer classes are correctly predicted, while the classification report confirms balanced precision, recall, and F1-scores across categories. These results validate the effectiveness of the model and its suitability for real-world agricultural applications.

The system also demonstrates efficient real-time performance, providing predictions instantly through a web-based interface. By reducing dependency on traditional methods and manual expertise, the system enhances decision-making and improves fertilizer usage efficiency. Overall, the results confirm that the proposed system is robust, scalable, and capable of supporting precision agriculture by minimizing resource wastage and maximizing crop productivity.

Overall, the experimental results confirm that the proposed system is not only accurate but also practical and scalable. It successfully bridges the gap between data-driven analysis and real-world agricultural application, providing a reliable tool for precision farming. The combination of high accuracy, real-time performance, and user-friendly output makes the system a valuable contribution to modern agricultural technology.

REFERENCES

1. Leo Breiman, "Random Forests," *Machine Learning*, vol. 45, no. 1, pp. 5–32, 2001.
2. F. Pedregosa, G. Varoquaux, A. Gramfort, et al., "Scikit-learn: Machine Learning in Python," *Journal of Machine Learning Research*, vol. 12, pp. 2825–2830, 2011.
3. Ian Goodfellow, Yoshua Bengio, and Aaron Courville, *Deep Learning*, MIT Press, 2016.
4. Jiawei Han, M. Kamber, and J. Pei, *Data Mining: Concepts and Techniques*, 3rd ed., Morgan Kaufmann, 2011.
5. Trevor Hastie, Robert Tibshirani, and Jerome Friedman, *The Elements of Statistical Learning*, Springer, 2009.
6. Food and Agriculture Organization, "Fertilizer and Plant Nutrition Guide," FAO, Rome, 2006.
7. Ministry of Agriculture and Farmers Welfare, "Soil Health and Agricultural Data Reports," Government of India.
8. D. P. Sharma and S. K. Singh, "Application of Machine Learning in Agriculture: A Review," *International Journal of Agricultural Science*, 2020.

V. CONCLUSION

The Fertilizer Recommendation System advances precision agriculture by integrating machine learning techniques with soil and environmental data to provide accurate and real-time fertilizer recommendations. The system leverages the Random Forest algorithm to analyze complex relationships between input features and generate reliable predictions, ensuring high performance and consistency across different conditions. By replacing traditional methods with a data-driven approach, the system significantly improves fertilizer usage efficiency and reduces environmental impact.

The implemented pipeline processes input parameters, performs preprocessing, generates predictions, and delivers structured outputs through a user-friendly web interface. The system provides interpretable results, including recommended fertilizers along with application instructions, dosage guidelines, and crop compatibility information, enabling users to make informed decisions. This contributes to improved crop yield, cost optimization, and sustainable farming practices.