

Smart Attendance System

Bhushan V. Surve¹, Chaitan L. Rane², Baburav K. Shelke³, Suraj S. Rawool⁴, Viraj S. Sawant⁵, Mr. P.D. Kate⁶

^{1,2,3,4,5}Member, ⁶Guide Department of Computer Engineering, Yashwantrao Bhonsle Institute of Technology, Maharashtra, India

Abstract:

In modern educational institutions, traditional attendance recording methods are time-consuming, error-prone, and vulnerable to proxy attendance. The integration of Artificial Intelligence (AI), Internet of Things (IoT), and cloud computing has enabled the development of intelligent attendance systems that ensure accuracy, transparency, and efficiency. This paper proposes a Smart Attendance System that utilizes Face Recognition technology integrated with IoT-enabled devices for automated and real-time attendance management. The system captures student images through a camera module, verifies identity using facial recognition algorithms, and stores attendance records in a centralized cloud database. The proposed solution reduces manual workload, eliminates proxy attendance, enhances data security, and provides real-time access to attendance reports for students, faculty, and administrators. The system is scalable, cost-effective, and suitable for implementation in schools, colleges, and universities.

I. INTRODUCTION:

The Smart Attendance System is an advanced and automated solution designed to modernize traditional attendance recording methods in educational institutions. Conventional attendance systems, such as manual roll calls and paper registers, are time-consuming, prone to human error, and vulnerable to proxy attendance. These limitations reduce classroom efficiency and increase administrative workload.

With rapid advancements in Artificial Intelligence (AI), Internet of Things (IoT), and Cloud Computing, educational institutions are moving toward digital transformation. Smart Attendance Systems leverage technologies such as Face Recognition, RFID, Biometric Authentication, and Mobile Applications to automatically record and manage attendance data in real time.

In a typical Smart Attendance System using Face Recognition, a camera captures student images during class. The system detects and verifies each face using machine learning algorithms and compares it with a stored database. Once verified, attendance is automatically marked and uploaded to

a centralized cloud server. This process eliminates proxy attendance, ensures accuracy, and reduces the time spent on manual recording.

The integration of IoT enables seamless communication between hardware devices (such as cameras or biometric scanners) and cloud databases. Faculty members and administrators can access attendance reports through web dashboards or mobile applications. Real-time monitoring improves transparency, accountability, and academic discipline.

Overall, the Smart Attendance System enhances efficiency, reduces paperwork, ensures data security, and supports the vision of smart and digitally empowered educational institutions.

II. LITERATURE SURVEY:

With the rapid development of digital technologies, researchers have proposed various automated attendance systems to replace traditional manual methods. The integration of biometric authentication, RFID, IoT, and Artificial Intelligence has significantly improved attendance accuracy,

transparency, and efficiency in educational institutions.

Early attendance systems were based on manual registers and barcode scanning, which required physical verification and human supervision. These systems were time-consuming and prone to manipulation. To overcome these limitations, RFID-based attendance systems were introduced. In RFID systems, students carry identification cards embedded with RFID tags, and attendance is marked automatically when the card is scanned. Although faster than manual methods, RFID systems are vulnerable to misuse, as students can exchange cards to mark proxy attendance.

Biometric-based attendance systems using fingerprint recognition were later developed to enhance security. These systems improved reliability and eliminated proxy attendance by verifying unique biometric traits. However, fingerprint systems require physical contact, which may cause hygiene concerns and hardware wear over time.

learning and deep learning algorithms such as Haar Cascade, Local Binary Pattern Histogram (LBPH), and Convolutional Neural Networks (CNN) to detect and identify students. These systems provide higher accuracy, faster processing, and better scalability compared to traditional biometric systems.

Despite these advancements, some challenges remain, including lighting sensitivity in face recognition systems, privacy concerns, and the need for robust data encryption. The proposed Smart Attendance System aims to address these issues by combining AI-based facial recognition with secure IoT and cloud integration to provide a reliable, scalable, and efficient attendance management solution.

III. SYSTEM ARCHITECTURE

The Smart Attendance System architecture is designed to provide automated, accurate, and real-time attendance management by integrating

hardware components, artificial intelligence, IoT communication, and cloud computing. The system begins with an image capture module, where a high-resolution camera installed in the classroom continuously captures student images or video frames. These captured images are sent to a processing unit such as a computer, Raspberry Pi, or embedded system for further analysis.

The processing module performs face detection and recognition using machine learning algorithms. Initially, the system detects faces in the captured frame using techniques such as Haar Cascade. After detecting the face, it extracts unique facial features and compares them with pre-stored data in the student database using algorithms like LBPH or deep learning-based Convolutional Neural Networks (CNN). If a match is found, the system automatically marks the attendance along with the date and time stamp, ensuring accurate and proxy-free attendance recording.

Once attendance is recorded, the IoT communication module transmits the data to a centralized cloud server using Wi-Fi-enabled devices such as ESP8266, ESP32, or Raspberry Pi. This real-time data transmission ensures that attendance information is instantly synchronized across the system. The cloud database securely stores all attendance records, student details, subject information, and timestamps. Data encryption and authentication mechanisms are implemented to maintain privacy and security.

Finally, the system includes a web-based or mobile dashboard that allows faculty members and administrators to access attendance reports, monitor student records, and generate analytics. The dashboard provides real-time updates, daily or monthly attendance summaries, and subject-wise performance reports. This centralized and automated architecture reduces manual workload, enhances transparency, and supports efficient academic management in smart educational institutions.

IV. METHODOLOGY

The methodology of the Smart Attendance System is designed to ensure accurate, automated, and real-time attendance recording using Face Recognition and IoT technologies. The process begins with the creation of a student facial dataset. During the registration phase, multiple images of each student are captured using a camera and stored in a secure database. These images are labeled with student details such as name, roll number, and class information to build a reliable training dataset.

After dataset collection, the system proceeds to the training phase. In this stage, machine learning algorithms such as Local Binary Pattern Histogram (LBPH) or deep learning-based Convolutional Neural Networks (CNN) are used to train the face recognition model. The algorithm extracts unique facial features and stores them in a structured format for future comparison. Proper training improves the accuracy and efficiency of the system.

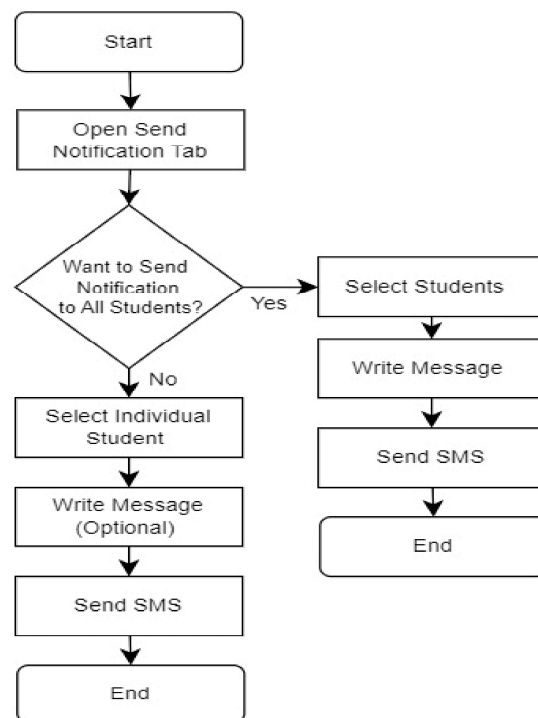
Once the model is trained, the system moves to real-time implementation. During classroom sessions, the camera continuously captures live images or video frames of students. The face detection algorithm identifies faces present in the frame, and the recognition algorithm compares them with the trained dataset. If a match is found, the system automatically marks attendance along with the current date and time.

The recorded attendance data is then transmitted through an IoT communication module, such as a Wi-Fi-enabled microcontroller or Raspberry Pi, to a centralized cloud database. This ensures real-time synchronization and secure storage of attendance records. Faculty members and administrators can access this information through a web or mobile dashboard, where reports and analytics are generated automatically.

Finally, the system is evaluated for accuracy, response time, and reliability under different conditions such as lighting variations and classroom size. Continuous monitoring and periodic dataset updates help maintain high performance. This

structured methodology ensures a secure, contactless, and efficient attendance management solution suitable for modern educational institutions.

V.FLOW CHART:



VI. RESULTS AND DISCUSSION

The implementation of the Smart Attendance System using Face Recognition and IoT demonstrated significant improvements over traditional attendance methods. During system testing, the face recognition model achieved high accuracy under normal classroom lighting conditions. The automated attendance marking process reduced the time required for attendance from several minutes in manual roll calls to a few seconds, thereby saving valuable lecture time. The system successfully eliminated proxy attendance, as each student's identity was verified using unique facial features.

The integration of IoT ensured real-time synchronization of attendance data with the centralized cloud database. Faculty members were able to view attendance records instantly through the

web dashboard, and administrators could generate daily, weekly, and monthly reports without manual data entry. This improved transparency, reduced paperwork, and minimized administrative workload. Additionally, the system maintained secure data storage through authentication and encryption mechanisms, enhancing data privacy.

However, the system performance was influenced by certain environmental factors. Variations in lighting conditions, camera resolution, and facial orientation slightly affected recognition accuracy. Proper camera positioning and periodic dataset updates improved system reliability. In larger classrooms, processing time increased slightly due to multiple face detections, but optimization techniques helped maintain acceptable response times.

Overall, the results indicate that the Smart Attendance System is efficient, accurate, and scalable for educational institutions. The discussion highlights that while minor technical challenges exist, they can be addressed through system optimization and hardware improvements. The proposed system successfully supports digital transformation in academic environments by providing a secure, automated, and transparent attendance management solution.

VII. LIMITATION:

Despite its advantages, the Smart Attendance System has certain limitations that must be considered during implementation. One of the primary limitations is its dependency on proper lighting conditions. Face recognition algorithms perform best in well-lit environments, and poor lighting or shadows may reduce detection accuracy. Similarly, changes in facial appearance such as wearing masks, glasses, hats, or significant hairstyle changes can affect recognition performance.

The system also requires a high-quality camera and sufficient processing power to ensure accurate and fast recognition. In large classrooms with many students, processing multiple faces simultaneously

may increase response time unless optimized hardware is used.

Another important limitation is data privacy and security concerns. Since facial data is sensitive biometric information, improper handling or weak security measures could lead to misuse or data breaches. Strong encryption, secure authentication, and compliance with data protection policies are essential.

Additionally, the initial setup cost, including camera installation, server configuration, and system training, may be higher compared to traditional attendance systems. Regular maintenance and dataset updates are also required to maintain accuracy over time.

Although these limitations exist, they can be minimized through proper system design, high-quality hardware, regular updates, and strong cybersecurity measures.

VIII. FUTURE SCOPE:

The Smart Attendance System offers wide opportunities for future enhancements and expansion as technology continues to evolve. One major area of improvement is the integration of advanced deep learning techniques such as Convolutional Neural Networks (CNN), DeepFace, and other AI-based recognition models. These advanced algorithms can significantly improve accuracy even under challenging conditions such as low lighting, different camera angles, partial face visibility, or changes in facial appearance. Continuous model training using updated datasets can further enhance system reliability over time.

Another important future scope is the integration of the system with mobile applications and smart notification services. Students and parents can receive instant alerts regarding attendance status, absentee reports, or low attendance warnings. Faculty members can also receive notifications about class attendance summaries immediately after each

session. This real-time communication can improve academic discipline and parental involvement.

The system can also be integrated with Enterprise Resource Planning (ERP) systems used by educational institutions. By linking attendance data with academic records, examination performance, and internal assessment marks, institutions can generate comprehensive student performance reports. AI-driven analytics can identify attendance trends, detect irregular patterns, and even predict potential academic risks based on attendance behavior.

For enhanced security, the future system may adopt multi-factor authentication by combining face recognition with voice recognition, QR-based authentication, or OTP verification. This layered security approach can make the system more robust and suitable for high-security environments.

In addition, the system can be expanded beyond educational institutions to corporate offices, industries, hospitals, and government organizations for employee attendance and access control. Integration with smart campus infrastructure such as automated classroom management, energy-efficient lighting systems, and security surveillance can transform it into a complete smart campus solution.

Cloud computing advancements will also allow large-scale deployment across multiple campuses with centralized monitoring. With the rise of edge computing, data processing can be performed locally on devices to reduce latency and improve response time. Furthermore, implementing strong data encryption, compliance with data protection regulations, and privacy-preserving AI techniques will ensure ethical and secure usage of biometric data.

Overall, the Smart Attendance System has the potential to evolve into a comprehensive intelligent monitoring and management platform that supports digital transformation, improves operational

efficiency, and enhances transparency in modern institutions

handling—the overall outcomes confirm the practicality of combining RFID sensing with IoT-enabled cloud communication for educational automation. The system establishes a scalable baseline that can be further strengthened through biometric validation mechanisms, enterprise-grade database migration, and predictive analytics integration.

XI. CONCLUSION

The Smart Attendance System using Face Recognition and IoT represents a significant advancement in modern attendance management. By replacing traditional manual methods with an automated, contactless, and intelligent solution, the system improves accuracy, efficiency, and transparency in educational institutions. The integration of Artificial Intelligence enables reliable identity verification, while IoT technology ensures real-time data transmission and synchronization with a centralized cloud database.

The proposed system successfully eliminates proxy attendance, reduces administrative workload, and saves valuable classroom time. Faculty members can easily access attendance reports through dashboards, and administrators can generate analytical reports for better academic monitoring and decision-making. The use of secure cloud storage and encryption mechanisms enhances data protection and ensures the confidentiality of sensitive biometric information.

Although certain challenges such as lighting dependency, hardware requirements, and privacy concerns exist, these limitations can be addressed through proper system design, regular updates, and strong cybersecurity measures. With continuous technological advancements and further improvements, the Smart Attendance System can become a standard solution for smart campuses and digitally transformed institutions.

In conclusion, the system not only modernizes attendance management but also contributes to the broader vision of digital transformation in education by creating a more organized, efficient, and transparent academic environment.

X. REFERENCES

- [1] H. W. Raza, "IoT-Based Automatic Attendance Management System Using Middleware," 2022.
- [2] P. Kadepurkar, P. R. Dsouza, and N. Jomichan, "IoT Based Smart Classroom," *International Journal of Applied Sciences and Smart Technologies*, vol. 3, no. 1, pp. 35–54, 2021.
- [3] O. O. Shoewu, O. A. Olaniyi, and A. Lawson, "Enhanced Smart Biometric Based Attendance (ES2BASYS) System Interfaced with POS Facility for a Smart Academic Institution," *Pacific Journal of Science and Technology*, vol. 21, no. 2, pp. 1–12, 2020.
- [4] T. Jain, M. Gupta, and S. Sharma, "IoT Based Biometric Attendance System," *International Journal of Electrical Engineering & Technology*, vol. 11, no. 2, 2020.
- [5] N. S. Gore, S. M. Patil, and A. R. Patil, "Fingerprint Based Attendance System Using IoT," *International Journal of Computer Science Trends and Technology (IJCT)*, vol. 7, no. 2, pp. 64–68, 2019.
- [6] M. A. Hannan, A. Mohamed, A. Hussain, and H. Basri, "RFID and IoT-Based Smart Attendance System for Educational Institutions," *IEEE Access*, vol. 8, pp. 95889–95899, 2020.
- [7] A. Al-Ali and M. Zualkernan, "Smart Classroom: A Framework for IoT-Based Learning Environment," in *IEEE International Conference on Smart Technologies*, pp. 1–6, 2018.
- [8] K. Verma and N. Sharma, "Cloud-Based Smart Attendance and Classroom Management System," *International Journal of Computer Science and Information Technologies (IJCSIT)*, vol. 10, no. 3, pp. 132–138, 2019.
- [9] S. S. Dey, "Biometric Security Systems for Smart Educational Environments," *International Journal of Information Security Science*, vol. 9, no. 2, pp. 45–52, 2020.
- [10] P. Gupta, A. Mehta, and S. Jain, "IoT Enabled Smart Education System," *International Journal of Innovative Research in Computer and Communication Engineering (IJIRCCCE)*, vol. 7, no. 4, pp. 3421–3427, 2019.